

Illustration - Type - E

3 601 M49 000  
 Issue |  
 Stand | 23-04-20 **Fig./Abb. 1**

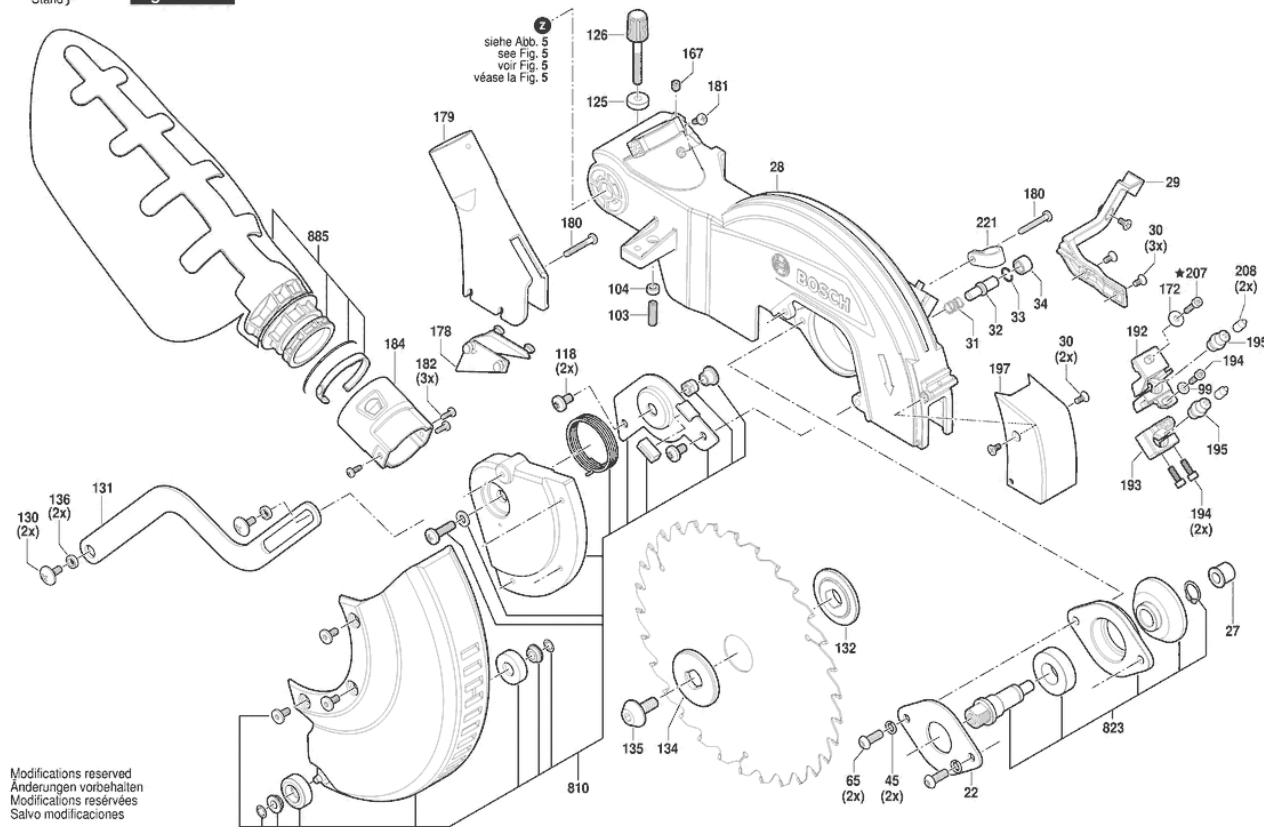


Illustration - Type - E

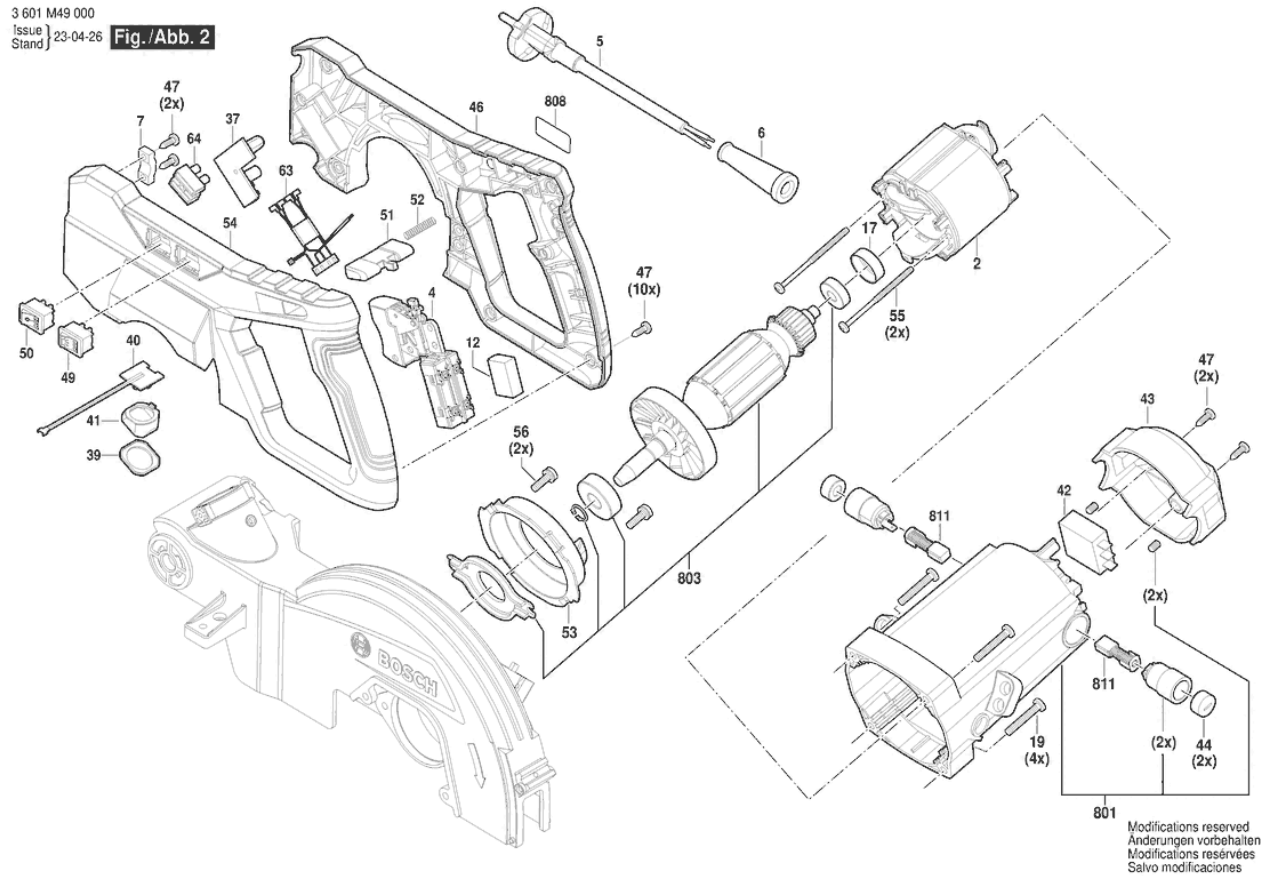


Illustration - Type - E

3 601 M49 000  
 Issue | 23-04-20  
 Stand } **Fig./Abb. 3**

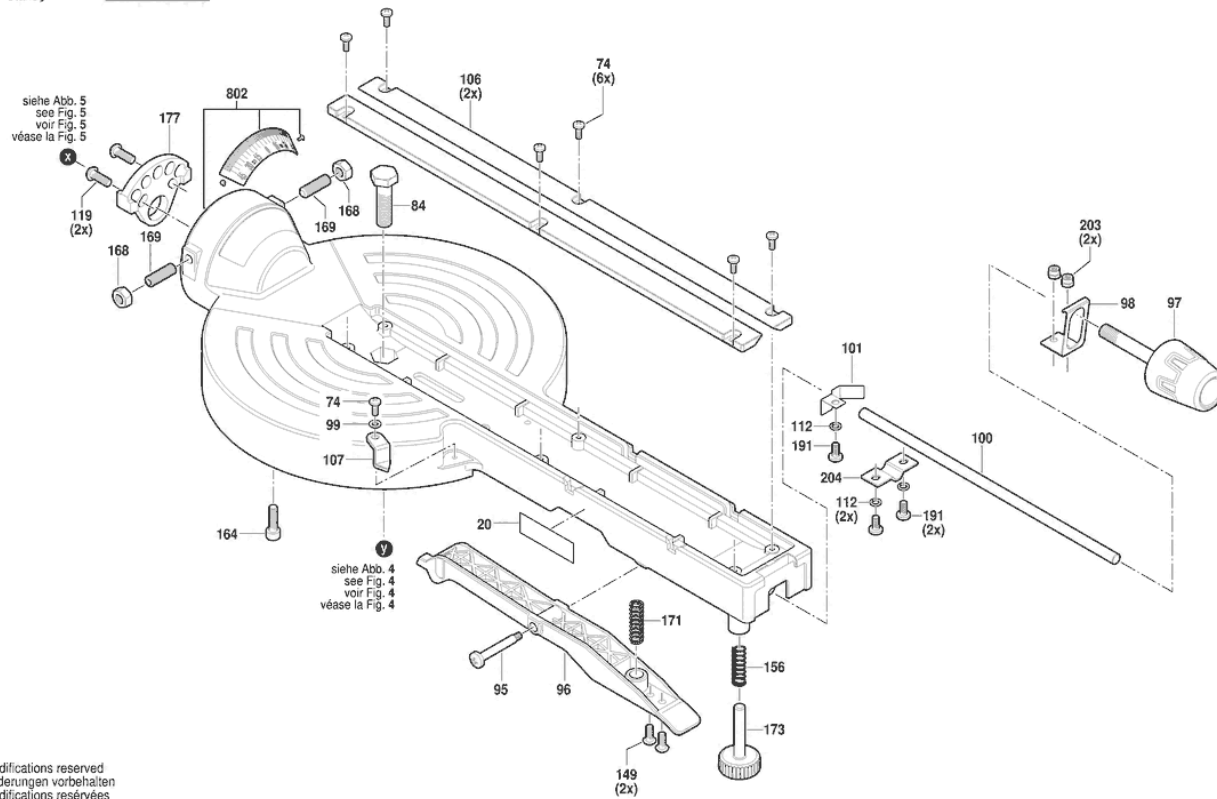


Illustration - Type - E

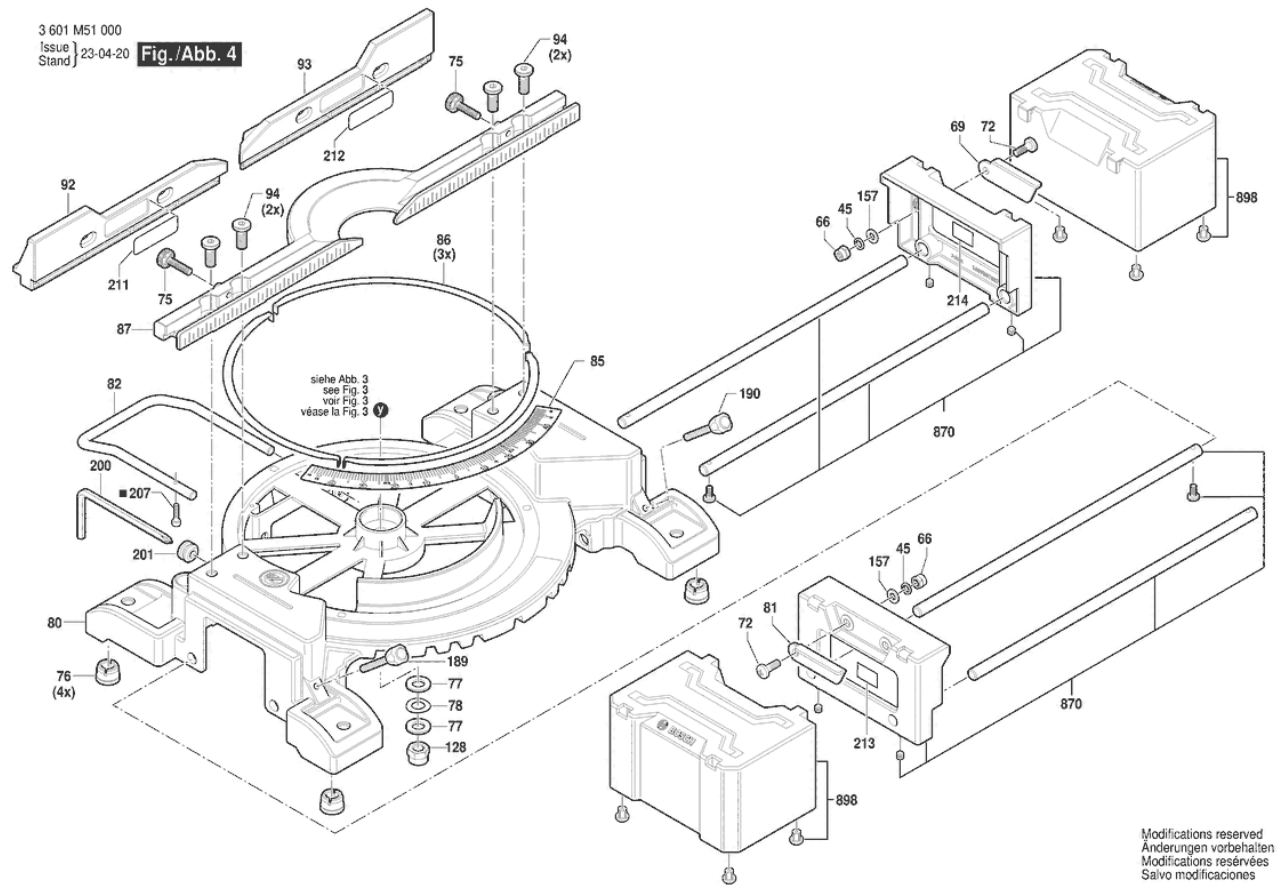


Illustration - Type - E

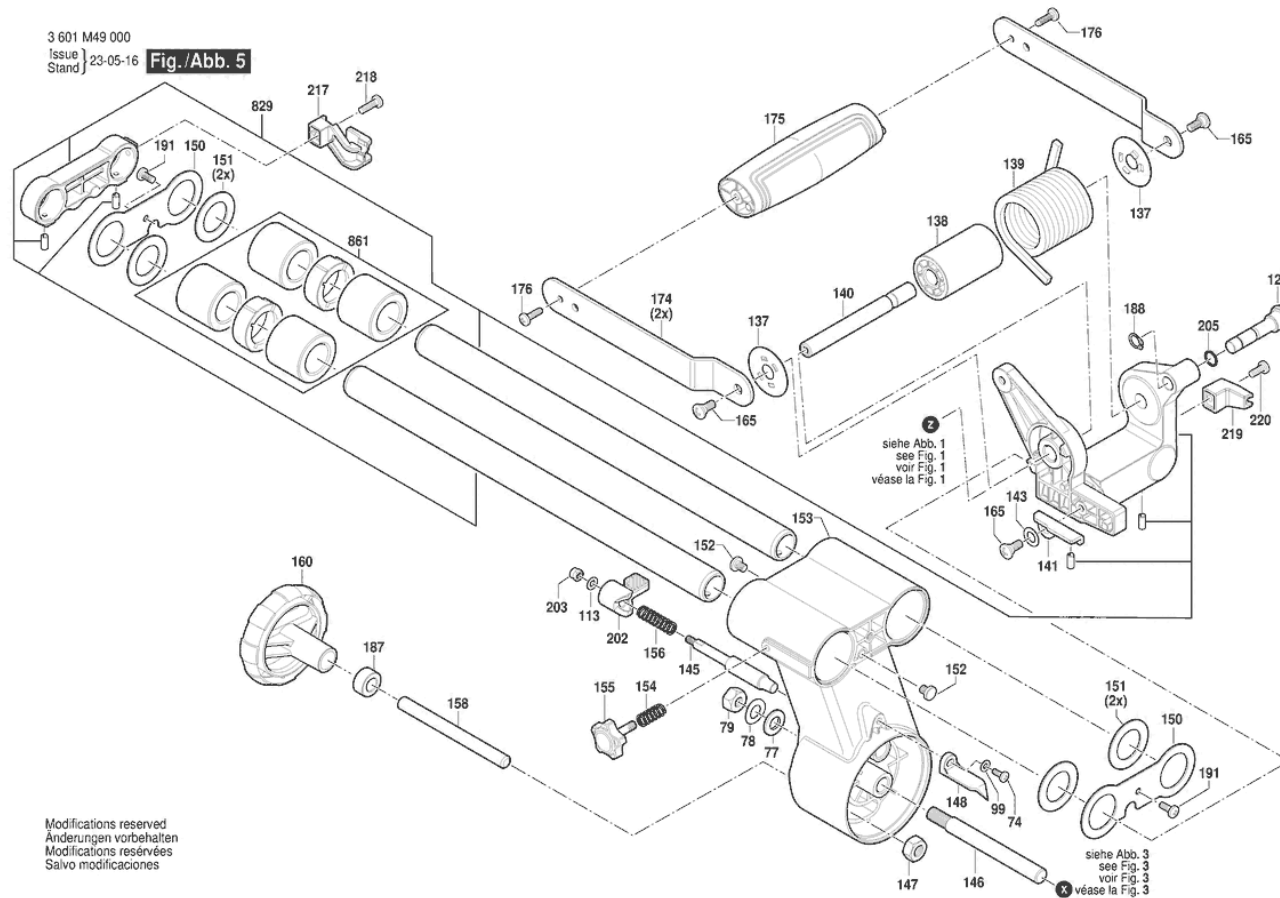
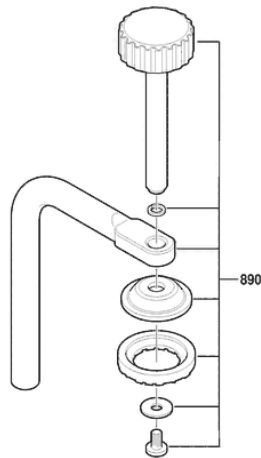


Illustration - Type - E

3 601 M49 000  
Issue | 23-04-20  
Stand | **Fig./Abb. 6**



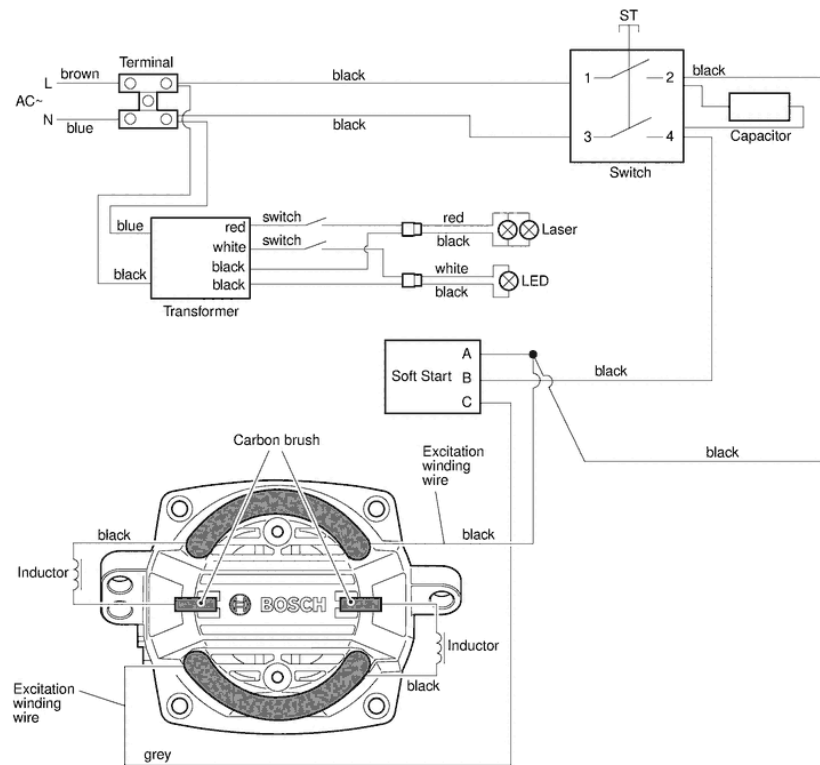
Anzugsmomente  
Torque values  
Couple de serrage  
Pares de apriete

Pos. 19	= 2,5 - 2,8 Nm
Pos. 30	= 0,35 - 0,5 Nm
Pos. 47	= 1,3 - 1,8 Nm
Pos. 55	= 1,2 - 1,5 Nm
Pos. 56	= 2,7 - 3,6 Nm
Pos. 62	= 0,6 - 1,0 Nm
Pos. 71	= 0,6 - 1,0 Nm
Pos. 74	= 0,9 - 1,3 Nm
Pos. 94	= 11,0 - 15,0 Nm
Pos. 95	= 4,8 - 6,4 Nm
Pos. 111	= 1,8 - 2,7 Nm
Pos. 118	= 4,8 - 6,4 Nm
Pos. 119	= 4,8 - 6,4 Nm
Pos. 130	= 2,7 - 3,6 Nm
Pos. 135	= 12,5 - 15,0 Nm
Pos. 147	= 12,0 - 15,0 Nm
Pos. 149	= 1,8 - 2,7 Nm
Pos. 159	= 2,7 - 3,6 Nm
Pos. 164	= 4,8 - 6,4 Nm
Pos. 165	= 2,7 - 3,6 Nm
Pos. 167	= 0,6 - 1,0 Nm
Pos. 168	= 7,5 - 10,0 Nm
Pos. 176	= 2,2 - 2,8 Nm
Pos. 180	= 1,3 - 1,8 Nm
Pos. 181	= 1,3 - 1,8 Nm
Pos. 182	= 0,6 - 1,0 Nm
Pos. 191	= 2,7 - 3,6 Nm
Pos. 194	= 0,9 - 1,3 Nm
Pos. ★207	= 0,9 - 1,3 Nm
Pos. ■207	= 1,3 - 1,8 Nm
Pos. 218	= 1,8 - 2,7 Nm
Pos. 220	= 1,8 - 2,7 Nm

Modifications reserved  
Änderungen vorbehalten  
Modifications réservées  
Salvo modificaciones

Illustration - Type - E

3 601 M49 000  
 Issue | 23-05-12  
 Stand | **Fig./Abb. 7**



Modifications reserved  
 Änderungen vorbehalten  
 Modifications réservées  
 Salvo modificaciones

## Spare parts list

Item	Part Number	Description	Illustration
22	1 609 B07 542	Mounting Plate	1
27	1 609 B07 547	Porous Bearing	1
28	1 609 B08 176	Arm	1
29	1 609 B08 135	Cable Cover	1
30	1 609 B07 550	Screw M4×8	1
31	1 609 B07 551	Compression Spring	1
32	1 609 B07 552	Detent Pin	1
33	1 609 B07 553	Retaining ring	1
34	1 609 B07 554	Push Button	1
45	1 609 B07 564	Spring Washer	1
65	1 609 B07 537	Screw M6×16/8.8	1
99	1 609 B07 615	Washer	1
103	1 609 B07 619	Pressure Screw M6×20/45H	1
104	1 609 B07 620	Rubber Retaining Ring	1
118	1 609 B07 634	Screw M6×10/4.8	1
125	1 609 B07 639	Knurled Nut	1
126	1 609 B07 640	Knob	1
130	1 609 B07 644	Shoulder Screw	1
131	1 609 B07 645	Connecting Link	1
132	1 609 B07 604	Flange	1
134	1 609 B07 606	Flange	1
135	1 619 PA4 354	Thread-forming tap. Screw	1
136	1 609 B07 649	Bushing	1
167	1 609 B07 679	Pressure Screw M6×8/45H	1
172	1 609 B07 684	Washer	1
178	1 609 B07 690	rubber lip	1
179	1 609 B07 691	Dust Extraction	1
180	1 609 B07 692	Tapping Screw ST4.2×25-F	1
181	1 609 B07 693	Tapping Screw ST4.2×9.5-F	1
182	1 609 B07 694	Tapping Screw ST3.5×9.5-F	1
184	1 609 B07 696	Connector	1
192	1 609 B07 704	Holder	1
193	1 609 B07 705	Holder	1
194	1 609 B07 706	Screw M4×12/8.8	1
195	1 609 B07 707	Laser module	1



## Spare parts list

Item	Part Number	Description	Illustration
197	1 609 B07 709	Cover	1
207	1 609 B07 719	Screw M4×16/8.8	1
208	1 609 B07 720	Terminal lug	1
221	1 609 B08 162	Cable Clip	1
810	1 609 B08 166	Lower guard	1
823	1 609 B07 630	Output Shaft	1
885	1 609 B07 930	Dust Bag	1
2	1 609 B07 708	Stator	2
4	1 607 200 39F	On-Off Switch	2
5	1 609 B08 116	Power supply cord EU H05VV-F/2×1.0MM2	2
6	1 609 B08 117	Grommet	2
7	1 609 B08 118	Fastening Clamp	2
12	1 609 B08 122	Capacitor	2
17	1 609 B07 556	Rubber Ring	2
19	1 609 B07 540	Screw M5×30/4.8	2
37	1 619 PA3 508	Printed-Board Assembly	2
39	1 609 B07 558	Protective Glass	2
40	1 609 B08 131	Led Board	2
41	1 609 B07 559	Reflector	2
42	1 609 B06 928	Soft starter	2
43	1 609 B08 178	Cover	2
44	1 609 B08 152	Brush-Cover	2
46	1 609 B08 179	Handle	2
47	1 609 B07 566	Screw ST4.2×13/1022A	2
49	1 609 B08 138	Switch	2
50	1 609 B08 137	Switch	2
51	1 609 B08 140	Trigger	2
52	1 609 B07 570	Compression Spring	2
53	1 609 B08 181	Air-Deflector Ring	2
54	1 609 B08 180	Handle	2
55	1 609 B08 153	Screw M4X64	2
56	1 609 B07 574	Screw and washer assembly M5×16/4.8	2
63	1 609 B08 154	Cable Adapter	2
64	1 609 B08 150	Plug Connector	2

## Spare parts list

Item	Part Number	Description	Illustration
801	1 609 B07 713	Housing Assembly	2
803	1 609 B07 648	Armature assembly	2
808	1 609 B08 069	Nameplate	2
811	1 609 B08 240	Carbon-Brush Set	2
20	1 609 B07 541	Warning Label	3
74	1 609 B08 161	Screw M6×16/4.8	3
84	1 609 B07 600	Bolt	3
95	1 609 B07 652	Lower guard	3
96	1 609 B07 612	Locking Lever	3
97	1 609 B07 613	Knob	3
98	1 609 B07 614	Spring Plate	3
100	1 609 B07 616	Rod	3
101	1 609 B07 617	fixing plate	3
106	1 609 B07 622	Support Plate	3
107	1 609 B07 623	Pointer	3
112	1 609 B07 628	Spring Washer	3
119	1 609 B07 635	Screw M6×16/8.8	3
149	1 609 B07 661	Screw	3
156	1 609 B07 668	Compression Spring	3
164	1 609 B07 676	Screw M6×20/10.9	3
168	1 609 B07 680	Nut M8/5	3
169	1 609 B07 681	Pressure Screw M8×25/45H	3
171	1 609 B07 683	Compression Spring	3
173	1 609 B07 685	Knob	3
177	1 609 B07 689	Detent plate	3
191	1 609 B07 703	Screw M5×10/4.8	3
203	1 609 B07 715	Lock Nut M5/5	3
204	1 609 B07 716	Support Plate	3
802	1 609 B08 268	Table	3
66	1 609 B07 583	Lock Nut M6/5	4
69	1 609 B07 586	Stop Plate	4
72	1 609 B07 633	Screw M6×16/4.8	4
75	1 609 B07 592	Knob	4
76	1 609 B07 593	Supporting foot	4
77	1 609 B07 594	Washer	4

## Spare parts list

Item	Part Number	Description	Illustration
78	1 609 B07 595	Spring Washer	4
80	1 609 B07 597	Base	4
81	1 609 B07 598	Stop Plate	4
82	1 609 B07 599	Auxiliary Support	4
85	1 609 B07 601	Scale Plate	4
86	1 609 B07 602	Wear Plate	4
87	1 609 B07 603	Mitre Fence	4
92	1 609 B07 608	Mitre Fence	4
93	1 609 B07 609	Mitre Fence	4
94	1 609 B07 610	Screw M8x20/8.8	4
128	1 609 B07 642	Lock Nut	4
157	1 609 B07 669	Washer	4
189	1 609 B07 701	Knob	4
190	1 609 B07 702	Knob	4
200	1 609 B07 712	Hexagon Socket Screw Key	4
201	1 619 PA7 028	Holder	4
211	1 609 B07 722	Label	4
212	1 609 B07 723	Label	4
213	1 609 B07 724	Label	4
214	1 609 B07 725	Label	4
870	1 609 B08 167	Extension Stand	4
898	1 609 B07 675	Supporting Block	4
79	1 609 B07 596	Lock Nut	5
113	1 609 B07 629	Washer	5
127	1 609 B07 641	Locking Pin	5
137	1 609 B07 650	Wear Plate	5
138	1 609 B07 651	Bushing	5
139	1 609 B07 611	Torsion Spring	5
140	1 609 B07 653	Shaft	5
141	1 609 B07 654	Stop Plate	5
143	1 609 B07 655	Wave spring	5
145	1 609 B07 657	Locking Pin	5
146	1 609 B07 658	Shaft	5
147	1 609 B07 659	Nut M10/6	5
148	1 609 B07 660	Pointer	5

## Spare parts list

Item	Part Number	Description	Illustration
150	1 609 B07 662	Cover Plate	5
151	1 609 B07 663	Felt Washer	5
152	1 609 B07 664	Rubber Pad	5
153	1 609 B07 665	Bracket	5
154	1 609 B07 666	Compression Spring	5
155	1 609 B07 667	Knob	5
158	1 609 B07 670	Pressure Screw M10×110/45H	5
160	1 609 B07 672	Handwheel	5
165	1 609 B07 677	Shoulder Screw	5
174	1 609 B07 686	Connection plate	5
175	1 609 B07 687	Carrying Handle	5
176	1 609 B07 688	Tapping Screw ST4.8×16-F	5
187	1 609 B07 699	Bushing	5
188	1 609 B07 700	Retaining ring	5
202	1 609 B07 714	Control Lever	5
205	1 609 B07 717	O-Ring 6.7×1.8	5
217	1 609 B08 171	Fastening Clamp	5
218	1 609 B07 578	Screw M5X16/4.8	5
219	1 609 B08 170	Fastening Clamp	5
220	1 609 B08 173	Screw M5X12/4.8	5
829	1 609 B08 169	Bracket	5
861	1 609 B08 352	Linear Roller Bearing	5
890	1 609 B06 930	Adjustable screw clamp	6